



TMMS+

The TMMS+ is a system for managing maintenance tasks that must be carried out on the assets that are part of an installation.

These assets may be toll system equipment (laser, barriers, antennas, platforms, loops, OCR, automatic payment machines, etc.), ITS system equipment (traffic lights, panels, AID, ventilation systems, ATCC, lighting systems, etc.), the hardware-software platform (the use of memory, servers, databases, etc.).

FUNCTIONS

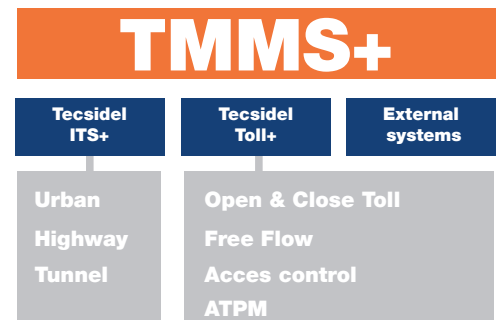
- Managing corrective maintenance: By creating work orders that are generated when a problem with the asset is detected.
- Managing preventative maintenance: daily, weekly, monthly, etc.

programming of work orders that need to be done in the future, to review the state of an asset.

- Managing predictive maintenance: Generation of automatic alarms through the configuration of measurements or limits of a register in real time related to an asset.
- Ticketing: Ticket management system with follow-up and status control. The system may assign tickets to work orders and control the status, completion dates and follow-up of tickets.
- Management of assets using geolocalization.
- Management of spare parts and materials with location.
- Administration of guarantees.
- List of suppliers.
- Purchase history.
- Follow-up on performance, reports

and statistics.

- User and profile management.
- Multi-concessionaire: The system will be able to handle the control of users between multiple concessionaires which will mean that one user may have access to one or more concessionaires and can generate central reports of all the concessionaires.

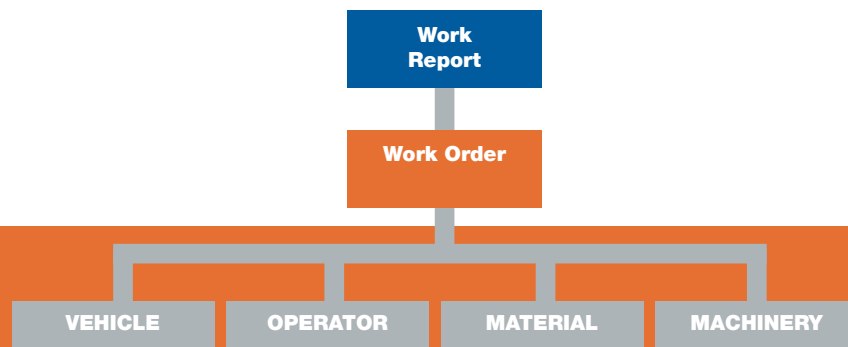


WORK ORDER MANAGEMENT

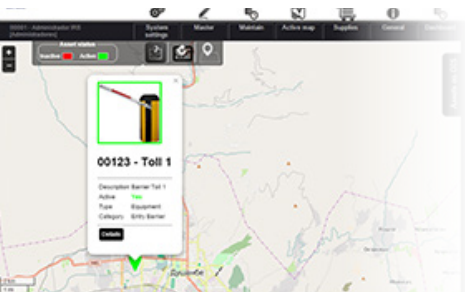
The TMMS+ bases maintenance management on the creation, follow-up and completion of work orders.

Each work order will define the asset that is the object of the intervention, the task to be done, the material to be used, the necessary machinery or tools and the vehicle to be used.

A work report will be a set of work orders that must be carried out by a certain member of staff on a specific date.



The functioning of this module allows the creation and maintenance of all the work orders, the carrying out of the follow-up and the report on the repair activities, as well as the materials used through to the solving of the maintenance task.



GEOLOCALIZATION OF ASSETS

The assets may be located in their exact position on a geographical map, by means of customisable iconography that represents the asset.

The asset will be represented by an icon with summarised information and by a speech bubble with all the detailed information regarding the asset.

TMMS+ MOBILE

The TMMS+ system has a mobile application that allows operators or maintenance staff (tolls, tunnels, roads and highways, etc.) to receive the work reports assigned and to respond to the work reports in the mobile device and send the responses to the central office.